

### HYDRAULIC MANUFACTURERS REPRESENTED



- Low profile & standard ball valves
- Flow Controls & Needle Valves
- Standard & Custom Port Flanges
- Power Units Accessories



- Fixed bent axis motors to 10.98 cu/in's.
- Continuous speeds to 8000 RPM
- Continuous pressure to 5800 PSI



- Modular Pump Drive Assemblies
- Outputs from 1 Pad up to 8 Pad
- Up to 1025 Max Horsepower
- Ratio Range from 1:1 through 1.38:1 Increase or Decrease



- Pressure Gauges, Transducers & Switches
- Level Sensors
- Temperature Transmitters; Probe, Resistance or Thermowells
- Instrumentation Valves



Powering Business Worldwide

- Industrial & mobile hydraulic components
- Hose & couplings products



- Hydraulic & lube filters
- Filter elements
- Fuel filtration
- Process filtration & diagnostic tools



- Full range of standard & custom heat exchanger solutions - air, water, & oil cooled



- Digital (on/off) & analog (proportional) valves
- Low leakage
- Flows from .005 to 300 GPM
- Explosion proof & intrinsically safe solenoids
- Electronic signal amplifiers
- Corrosion resistant materials



- Gear pumps
- Gear motors
- Displacements to 18.91 cu. in.
- Pressures up to 4,000 PSI
- Single & multi-section configurations

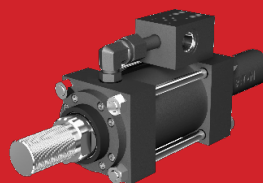
### OTHER BRANDS SUPPORTED

Accumulators, Inc.  
Ace Controls LLC  
Air Sentry  
Behringer Systems  
Bosch-Rexroth/Rineer  
Cardev International  
Comatrol  
Cross Manufacturing, Inc.

Donaldson Company Inc.  
Dynamic  
Eaton Hydrokraft  
Emerson Damcos  
Freelin Wade Co.  
Hedland  
Hub City

Jarp Custom Cylinders  
Kocsis Technologies, Inc.  
Magnaloy Coupling Company  
Mico Inc.  
MiniBooster  
Panolin  
Rego Cryo-Flow Products

Rotary Power  
Stauff Corporation  
Supreme Integrated Technology, Inc.  
Thermal Transfer  
Tuthill Pump Company  
Voith  
Von Ruden Manufacturing, Inc.



### FLUID CONVEYANCE MANUFACTURERS REPRESENTED



- Carbon & Stainless-Steel Flanges & Weld Couplings
- Suction & Return Connections
- Flow Controls, Needle Valves & Check Valves
- 2- and 3-Way Ball Valves



- Flat Face Quick Couplers
- Multi-Port Couplers
- Threaded Couplers
- Poppet Interchange, High Pressure & Specialty Couplers



- Industrial Hose Connections: Clamps, Sleeves, Ferrules, etc..
- Cam & Groove Connections
- Brass & Tube Fittings
- Pipe & Weld on Fittings

#### OTHER BRANDS SUPPORTED

Adaptall  
Behringer Systems  
Brennan Industries  
Coxreels  
Daman  
DMIC  
Eaton Everflex Hose  
Eaton Hansen

Eaton Industrial  
Eaton Synflex  
Hannay Reels  
Hosebun  
Hydrotechnik, LTD.  
Kuriyama of America, Inc.  
Texcel  
Ultra Clean Technologies



- Full Line Hydraulic Hose & Fittings
- Wide Range of Hydraulic Adapters & Couplings

### PNEUMATIC MANUFACTURERS REPRESENTED



- Gear pumps
- Gear motors
- Displacements to 18.91 cu. in.
- Pressures up to 4,000 PSI
- Single & multi-section configurations



- Brass, Stainless & Aluminum Directional Control Valves
- High Flow, Manifold & Direct Acting Valves
- Ideal for Natural Gas Midstream & Industrial Applications
- Industry Leading Solenoid Valves Rated Up to Class 1 Div 1, ATEX-IECEX, IP68
- Media; Air, Inert Gas, Hydraulic, Natural Gas & Water



- Air Preparation; Filters, Regulators and Lubricators
- Directional & Proportional Control Valves
- Wide Range of Actuators
- Fittings, Switches & Vacuum

#### OTHER BRANDS SUPPORTED

Control Air, Inc.  
Koganei International America, Inc.  
Tolomatic, Inc.

### ELECTRIC MANUFACTURERS REPRESENTED



- Variable Frequency Drives
- Mobile & industrial applications



- Hydraulic System Measurement & Testing Equipment
- Pressure Test Points, Gauges, Transducers & Transmitters
- Flow Meters for Test & Measurement
- Datalogging Kits & Instrumentation



- Radio operated remote controllers
- Push button or joystick control for on/off & proportional control
- Hazardous areas radio remotes

#### OTHER BRANDS SUPPORTED

Elite Controls, Inc.  
Pepperl+Fuchs, Inc.