



Local Solutions For Individual Customers Worldwide

STAUFF Clamps



STAUFF Test



Filtration Technology



Diagtronics



Hydraulic Accessories



Valves



Flanges



Accumulators



ONE

Product Overview



Stauff USA

Your Hydraulic Accessory Partner for the Future

By combining the talents of qualified personnel, with the use of the latest technology and equipment, Stauff is ideally positioned to provide a broad range of Quality Hydraulic Accessories to the Fluid Power Distributor and Manufacturing and Process Industry.

Our service commitment to you

- To provide fast turnaround time on all orders for standard products from inventory in both the USA and Canada
- To provide competent product support staff and the necessary in-house manufacturing capabilities to customize products for a wide variety of user requirements
- To provide well trained sales engineering personnel for local product and application advice
- To be customer oriented with excellent warranty and business policies
- To introduce new products on a consistent basis to meet customer demand



Quality Assurance

All Stauff manufacturing locations have Quality certification to ISO 9001:2000 which ensures continuous control of all procedures and consistent product quality.

All STAUFF products are checked and tested in our own laboratories, to the most rigorous international standards.

The main manufacturing plants in Germany also met the environmental standard DIN EN ISO14001:2005 and OHSAS 18001:1999 which guarantee maximum protection and safety of employees and help minimize downtime and production delay.

In addition to a consistent product quality, Stauff can provide complementary services to fulfill the needs of our customers.

Numerous country or industry specific certificates and approvals are available on request.

All these factors contribute to the high standards of product and services that can be provided by Stauff on a worldwide basis.



Our products are a driving force, whether on land, on water or in the air.

The exceptional quality of the equipment and the machines in which STAUFF products are used form the benchmark for the functionality and precision of the STAUFF product portfolio.

STAUFF products play a crucial role in many key sectors such as mobile and industrial hydraulics.

The complete portfolio is as varied as the sectors in which the products are used.

- **Mobile Applications:**

construction, forestry, agricultural and mining equipment; municipal vehicles; lifting and material handling; marine, railroad and automobile transportation; etc.

- **Industrial Applications:**

machines, engines and power units (metal-working machinery, iron and steel industry, injection moulding machinery, etc.); production, transportation and processing of oil and gas (on-shore and off-shore); wind power; nuclear plants and reactors; chemical and food processing industries; etc.

Product Applications



1



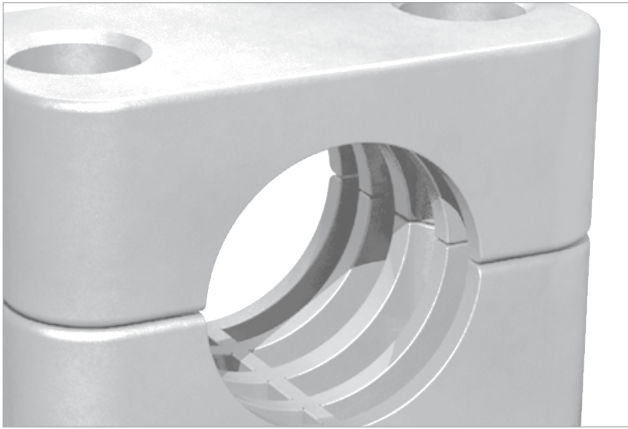
2



3



Figures: 1. ThyssenKrupp Marine Systems AG; 2. Nordex AG; 3. Voith Paper GmbH & Co. KG



STAUFF Clamps

Clamping systems for pipes, tubes, hoses, cables and other components; custom-designed special clamps according to customer's requirements



Standard Series acc. to DIN 3015-1

- For diameters up to 102 mm
- Clamp bodies made of Plastic or Aluminium
- Installation equipment in Steel or Stainless Steel



Heavy Series acc. to DIN 3015-2

- For diameters up to 450 mm
- Clamp bodies made of Plastic or Aluminium
- Installation equipment in Steel or Stainless Steel



Twin Series acc. to DIN 3015-3

- For diameters up to 42 mm
- Also available for two different diameters
- Clamp bodies made of Plastic
- Installation equipment in Steel or Stainless Steel
- Also available as Heavy or Compact version



Saddle Clamps for Cylinder Supply Lines



Light Series

- Single or Double version available
- For diameters up to 32 mm
- Also available for two different diameters
- Clamp bodies made of Plastic
- Installation equipment in Steel or Stainless Steel



Construction Series

- For diameters up to 1000 mm
- Robust multi-part Steel construction
- For weld or bolt installation



Flat and Round Steel U-Bolts

- For diameters up to 521 mm
- U-Profile and accessories made of Steel or Stainless Steel
- Also available with Plastic Pipe Saddle
- Rubber-Shrouded versions available



Metal Pipe Clamps acc. to DIN 3567-A/B

- For diameters up to 521 mm



Light Saddles acc. to DIN 1592/93

- Heavy Saddles acc. to DIN 1596/97
- For diameters up to 115 mm



Cushion Clamp Series



Custom-Designed Clamps

- Custom-designed clamping systems according to customer's specifications or based on STAUFF developments
- Clamp bodies made of Plastic or Metal
- Machined or injection moulded versions

STAUFF Test

Pressure test systems for monitoring and control of fluid and gaseous pressure systems; for venting and sampling in high- and low-pressure systems



Test 20 - Connection Thread M16 x 2

- Available with ball check and piston valve
- Max. working pressure 630 bar / 9137 PSI
- Coupling at working pressure
- Available in Steel, zinc/nickel-plated C6F (CrVI-free) or Stainless Steel



Test 15 - Connection Thread M16 x 1,5

- Available with ball check and piston valve
- Max. working pressure 630 bar / 9137 PSI
- Coupling at working pressure
- Available in Steel, zinc/nickel-plated C6F (CrVI-free) or Stainless Steel



Test 12 - Connection Thread S12,65 x 1,5

- Available with piston valve
- Max. working pressure 630 bar / 9137 PSI
- Coupling at working pressure
- Available in Steel, zinc/nickel-plated C6F (CrVI-free) or Stainless Steel



Test 10 - Plug in System

- Available with ball check
- Max. working pressure 400 bar / 5801 PSI
- Coupling at working pressure
- Available in Steel, zinc/nickel-plated C6F (CrVI-free)



Adaptors

- Thread and Welding Adaptors
- Gauge Adaptor
- Sampling Hose Adaptor
- Hose Connector



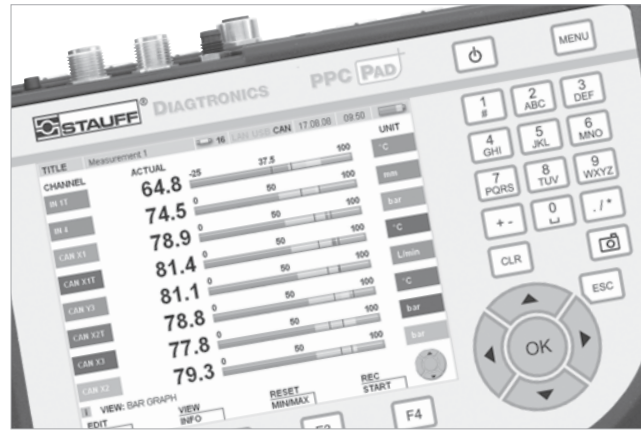
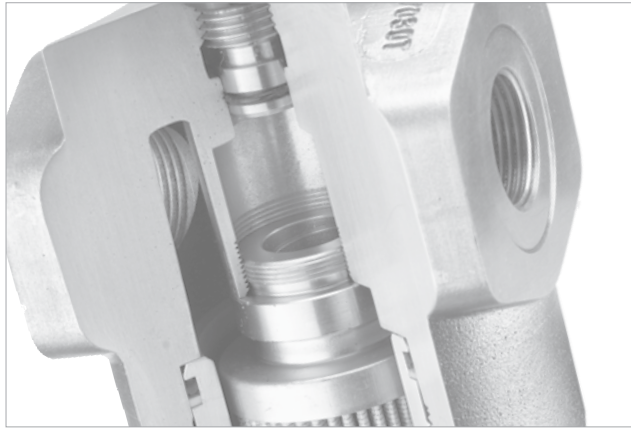
Pressure Gauges and Accessories

- Stainless Steel Pressure Gauges
- Pressure Test Kits (consisting of test hoses, pressure gauges, test points, adaptors and accessories)
- Can be assembled according to customer's requirements



Test Hoses and Accessories

- Nominal bores DN2 and DN4
- Max. working pressure 630 bar / 9137 PSI
- Comprehensive range of Hose Ends



Filtration Technology

Filter systems for the basic equipment of mobile and industrial hydraulic applications; wide range of replacement filter elements



High Pressure Filters

- Max. working pressure up to 420 bar / 6000 PSI
- Max. flow rate up to 1320 l/min / 300 US GPM
- Available for different installation positions



Medium Pressure Filters

- Max. working pressure up to 160 bar / 2320 PSI
- Max. flow rate up to 1320 l/min / 300 US GPM



In-Line Filters

- Max. working pressure up to 14 bar / 200 PSI
- Max. flow rate up to 7000 l/min / 1850 US GPM



Return Line Filters

- Max. working pressure up to 34,5 bar / 500 PSI
- Max. flow rate up to 1135 l/min / 300 US GPM



Spin-On Filters

- Spin-On Filter Heads
- Comprehensive range of Spin-On Filter Elements
- Clogging Indicators



Offline / Bypass Filters

- Max. system volume up to 10800 l / 2853 gal
- Available with integrated motor/pump unit
- Several motor types available



Mobile Filter Units

- Nominal flow rate up to 110 l/min / 30 US GPM
- Several types available



Replacement Filter Elements

- Replacements for all major brands available
- More than 10000 different types
- Large stock-availability

Diagtronics

Analog and digital pressure test systems for monitoring and analysis of hydraulic fluids (pressure, temperature, flow rate, rotational speed, contamination)



Pressure Gauges

- Analog and digital pressure measuring of fluid and gaseous media
- Determination and wireless transmission of measured values
- Pressure Test Kits available with comprehensive accessories



Hydraulic Testers PPC-04/2, PPC-06/08-plus

- Digital measuring device for working pressure, temperature, flow rate and rotational speed
- Available with up to 6 sensor interfaces; automatic recognition and identification of connected sensors
- Internal data storage capacity for up to 250000 data points
- Permanent recording of MIN/MAX values



Hydraulic Tester PPC-Pad

- Portable multi-function hand-held measuring instrument
- Pressure, temperature, flow and speed can be measured, monitored and analysed
- Measurement and display of over 50 channels
- Measured value display: numerical, bar graph, pointer, curve graph
- Project templates can be saved and loaded
- Interfaces: CAN, LAN, USB
- Total memory with up to 1 billion measured values



Laser Particle Counters

- 8-channel particle counters for the contamination control of hydraulic fluids
- 3 versions available (portable, mobile, inline)
- Comprehensive range of accessories (e.g. Bottle Sampler)
- 4-channel particle counters for the permanent contamination control of hydraulic fluids



Sensors and Switches

- For continuous monitoring of critical hydraulic systems
- Wide range of STAUFF transmitters and switches are available
- Available in many pressure and temperature ranges



Flow Meters



Hydraulic Accessories

Components for the construction of hydraulic reservoirs and power units for the mobile and industrial hydraulic sectors



Level Gauges

- Visual/electrical level indication
- Also available with thermo sensors / switches for temperature indication



Filler Breathers

- Made of Plastic or Metal
- Different types and accessories



Giant Air Breathers



Desiccant Air Breathers

- Economy version or with check valves available
- Visual Contamination Indicator with adaptor plate



Suction Line Accessories

- Suction Strainers



Return Line Accessories

- Diffusers
- Return Line Bushings



Pipe, Tube and Hose Cleaning System

Valves

Shut-off and throttle valves from DN2 to DN125 for the mobile and industrial hydraulic sectors



Two-Way Ball Valves

- Block, forged or round body design
- Different connection styles and sizes
- Available in Steel, zinc/iron-plated C6F (CrVI-free) or Stainless Steel



Multi-Way Ball Valves

- Block body design
- Three-way or four-way selector
- Available with L-, T- or double L-bore
- Different connection styles and sizes
- Available in Steel, zinc/iron-plated C6F (CrVI-free) or Stainless Steel



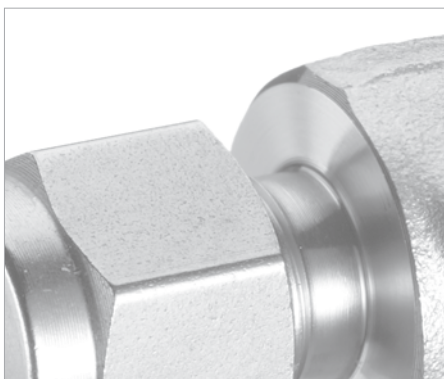
Flow Control Valves

- Throttle and shut-off the flow of liquid media in both directions or only in one direction (free flow in reverse direction)
- Also with pressure compensating
- Available in different designs (for in-line, manifold or cartridge assembly)
- Check Valves



Gauge Isolator Valves

- Effective protection of pressure gauges against overload caused by pressure peaks
- Multi station version for pressure measurement on six positions in the hydraulic circuit with only one pressure gauge



Process Products

Components for use in industrial clean and ultra-clean rooms that require highest standards in terms of hygiene and design

- Hi-Clean pipe and tube supports made of Stainless Steel
- SUPERLOK Twin Ferrule Compression Fittings
- Flexible Metal Hoses
- Valves and Quick Connects



Flanges

Full range of SAE flanges (standard and high-pressure series) and gear pump flanges

SAE Flanges

- According to DIN ISO 6162-1/2 and SAE J 518C
- Standard and high-pressure series
- Nominal sizes DN13 to DN127
- Split flange halves and flange clamps
- Butt weld and socket weld adapters
- Both straight and 90° version available
- Male threaded adapters with 24° cone connector
- Single-part flanges available in different types (e.g. female threaded flanges, butt weld and socket weld flanges, male threaded flanges), both straight and 90° version available
- Flange blocks

Gear Pump Flanges

- In different types and sizes (e.g. 3- or 4-hole flanges)
- Both straight and 90° version available
- Threaded connections, butt weld and socket weld flanges, fitting and screw-in flanges



Accumulators

Stauff offers a full range of bladder accumulators up to 15 gallons and diaphragm accumulators to 3.5 liters, plus parts and accessories ...

Bladder Accumulators

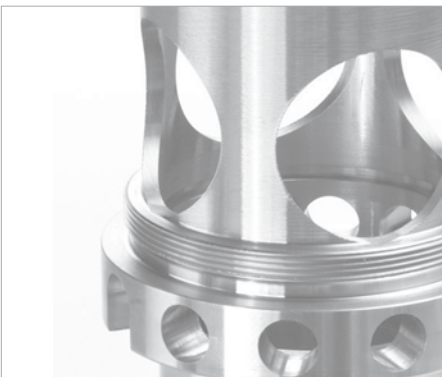
- 1 Qt-15 Gallon Capacity
- ASME Specification
- Seamless Chrome Alloy Steel Shell-Black Epoxy coated
- SAE & NPT Threaded & SAE Flange Port options
- 3000 PSI Bottom Repairable
- 3000 PSI Bottom Repairable- High Flow
- 3000 PSI Top Repairable
- 5000 PSI Bottom Repairable
- Nitrile, Buna & Viton Seals

Diaphragm Accumulators

- 0.075-3.5 Liter Capacity
- Operating Pressure up to 3600 PSI
- High Strength Alloy Steel Shell
- Electron Beam Welded Construction
- Corrosion resistant Black Gloss Finish
- Nitrile & Buna Diaphragm, other materials on request
- US & Metric Gas Port Styles are available

Accumulator Accessories

- Replacement Bladders
- Charging Kits for Bladder Accumulators
- Repair Kits for Bladder Accumulators
- Accumulator Safety Valves
- Port Adaptors (SAE to Flange)
- Charging Kits for Diaphragm Accumulators
- Accumulator Mounting Brackets



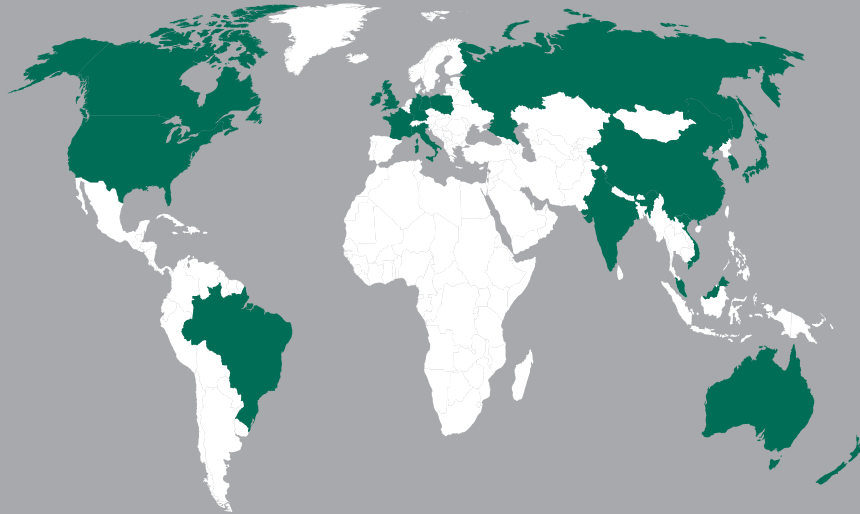
System Technology

Turned, milled, punched and bent parts

- All suitable materials such as Steel, Stainless Steel, non-ferrous metals or thermoplastics
- Various surface and heat treatments
- Size of up to 65 mm on automatic bar machines and up to 400 mm on automatic chuck lathes
- Production on modern single and multi-spindle automatic lathes, long turning automatic screw machines and CNC turning centers
- Permanent control of all production processes



Local Solutions For Individual Customers Worldwide



AUSTRALIA

STAUFF Corporation Pty. Ltd.
P. O. Box 227
Wollongong, NSW, 2526
24-26 Doyle Avenue
Unanderra, Wollongong, NSW, 2526
Tel.: +61 2 4271 18 77
Fax: +61 2 4271 84 32
sales@stauff.com.au

FRANCE

STAUFF S.A.S.
230, Avenue du Grain d'Or
Z.I. de Vineuil - Blois Sud
41354 Vineuil-cedex
Tel.: +33 2 54 50 55 50
Fax: +33 2 54 42 29 19
direction@stauffsa.com

ITALY

STAUFF Italia s.r.l.
Viale Nuova Valassina 78
angolo Via Baragiola sn
20832 Desio (MB)
Tel.: +39 0362 63 80 70
Fax: +39 0362 63 80 69
sales@stauff.it

RUSSIAN FEDERATION

STAUFF LLC
Building 1
19, Leninskaya Sloboda
Moscow, 115280
Tel.: +7 495 276 16 50
+7 495 223 89 61
Fax: +7 495 276 16 51
sales@stauff.ru

BRAZIL

STAUFF Brasil Ltda.
Avenida Gupê 10767
Galpão 2 - Bloco A
Barueri - São Paulo
CEP 06422-120
Tel.: +55 11 47 72 72 00
Fax: +55 11 47 72 72 10
stauff@stauffbrasil.com

GERMANY

Walter Stauffenberg GmbH & Co. KG
P. O. Box 1745
58777 Werdohl
Im Ehrenfeld 4
58791 Werdohl
Tel.: +49 23 92 916 0
Fax: +49 23 92 916 160
sales@stauff.com

KOREA

STAUFF Korea Ltd.
1500-12, Dadae-Dong
Saha-Ku
Pusan, 604-826
Tel.: +82 51 266 66 66
Fax: +82 51 266 88 66
info@stauff.co.kr

UNITED KINGDOM

STAUFF UK Ltd.
500, Carlisle Street East
Off Downton Drive
Sheffield, S4 8BS
Tel.: +44 114 251 85 18
Fax: +44 114 251 85 19
sales@stauff.co.uk

CANADA

STAUFF Canada Ltd.
866 Milner Avenue
Scarborough
Ontario M1B 5N7
Tel.: +1 416 282 46 08
Fax: +1 416 282 30 39
sales@stauffcanada.com

INDIA

STAUFF India Pvt. Ltd.
Gat. No. 2340
Pune Nagar Road, Wagholi
Pune, 412207
Tel.: +91 20 66 20 2473
Fax: +91 20 27 05 1567
sales@stauffindia.com

NEW ZEALAND

STAUFF Corporation (NZ) Ltd.
P. O. Box 58517
Greenmount, Auckland
Unit D, 103 Harris Road
East Tamaki, Auckland
Tel.: +64 9 271 48 12
Fax: +64 9 271 48 32
info@stauff.co.nz

UNITED STATES

STAUFF Corporation
7 Wm. Demarest Place
Waldwick, 07463-1542
New Jersey
Tel.: +1 201 444 78 00
Fax: +1 201 444 78 52
sales@stauffusa.com

Globally available through
wholly-owned branches and
distributors in all industrial
countries.

CHINA

STAUFF Hydraulic Components &
Services Co., Ltd.
No. 41-42, Lane 369, Chuang Ye Road
Jushuo Industrial Zone, Kang Qiao
Shanghai, 201319
Tel.: +86 21 68 18 70 00
Fax: +86 21 68 18 71 36
info@stauff.com.cn

IRELAND

STAUFF Ireland Ltd.
Block B, 9 Ferguson Drive
Knockmore Hill Industrial Estate
Lisburn, County Antrim
BT28 2EX
Tel.: +44 28 92 60 69 00
Fax: +44 28 92 60 26 88
sales@stauffireland.com

POLAND

STAUFF Polska Sp. z o.o.
Miszewko 43 A
80-297 Banino
Tel.: +48 58 660 11 60
Fax: +48 58 629 79 52
sales@stauff.pl

www.stauff.com